

CTX 3030

The Future of Discovery

TREASURE



FBS 2 Smartfind 2   WiStream

World's Best Metal Detection Technologies


MINELAB
www.minelab.com

CTX 3030

The waterproof all-terrain CTX 3030 is the ultimate high performance TREASURE detector.

Discover more historical treasures with the most accurate target identification available. With a full color LCD and advanced Target Trace discrimination you will find more treasure, even amongst junk littered areas, in all ground conditions.

Enjoy the freedom of wireless audio with the versatility of built-in speaker and headphone options.

With Minelab's exclusive integrated GPS, you can navigate to your favourite locations and record your finds. Transfer your detecting information onto Google Maps using the XChange 2 PC application.

'Switch on and go' simplicity, five preset Search Modes and many automatic functions make it easy for the beginner to get started. Advanced features are easily accessible at the touch of a button for the experienced treasure hunter.

With the unrivalled performance of the CTX 3030 you'll experience *The Future of Discovery!*

"Minelab listened to the marketplace and designed a detector that incorporates technology, functionality and flexibility that, until now, we could only dream about."

Field Tester – USA



"On first seeing the CTX 3030 its overall look and list of features are impressive and it was obvious from the first time I used this machine that it has an air of superiority about it."

Field Tester – Australia



"The balance of this detector is far superior to previous FBS models. Frankly, better than any other detector I've used with this sized coil."

Field Tester – USA



Rear Speaker
USB Connection
Pinpointing Trigger



Color LCD Screen

Comfort Grip



11-inch Coil (CTX 11)

Full Carbon Fiber Shaft

Adjustable Armrest

1/4-inch Headphone Module

Headphones (KOSS UR30)

Headphone Socket

Wireless Module (WM 10)

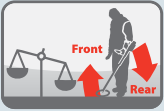
Built-in Speaker



Battery Pack

Main Features

- Waterproof**
You can go detecting anywhere with this versatile TREASURE detector. You have the flexibility of land and underwater detecting as the CTX 3030 is waterproof* to 10 ft (3 m).
- Wireless Audio**
Have the freedom to detect without your headphones being attached to your detector. With the WM 10 Wireless Module^ you have the choice of using the built-in speaker, supplied headphones or your own favorite headphones.
- Ultimate FeCo Discrimination**
With Ferrous (Fe) and Conductivity (Co) target resolution, plus adjustable Tone ID Profiles, you can detect (accept) the targets you want to and ignore (reject) the rest. With Target Trace and Target Separation, you can identify multiple targets simultaneously for accurate detecting results.
- Full Color Display**
The full color LCD clearly displays more target information than ever before and greatly enhances the CTX 3030's discrimination capabilities.
- GPS Locating**
See where you have been, and where you are going, by using the Map screen and Navigation Tool.
 - GeoTrails show the ground that you have already covered.
 - WayPoints mark points of interest.
 - FindPoints mark your treasure locations.
 - GeoHunts record your entire detecting adventure.
- PC Mapping (with Google Maps)**
Upload all of your detector settings and treasure locations to your PC using the XChange 2 application. Attach photos and text to your finds, group them into categories. View the locations on Google Maps. You can also download data to your detector for re-exploring favorite areas.
- Quick Menus (and smart functions)**
Quick Menu give you easy access to 'on the go' adjustments. Smart functions (Sensitivity, Noise Cancel, Audio, Ground Balance) and a customizable User button allow fast changes to your most used controls while detecting.
- Ergonomic Design**
The well balanced design has all the battery weight behind the armrest for comfortable detecting. The detector is fully adjustable to suit your needs.
- Multi-Languages**
You can choose from 9 different languages: English, French, German, Italian, Polish, Portuguese, Russian, Spanish or Turkish.
- Key Technologies**
 - FBS 2 uses multiple frequency transmission and coil-to-detector data communication to find more targets in variable ground conditions.
 - Smartfind 2 provides digital signal processing and precision FeCo discrimination, with color target information, for the best target identification results.
 - GPSi has very high sensitivity for accurate recording of geo locations.
 - Wi-Stream creates very fast wireless audio with no loss of sound quality.



FBS 2

Smartfind 2

GPSi

Wi-Stream

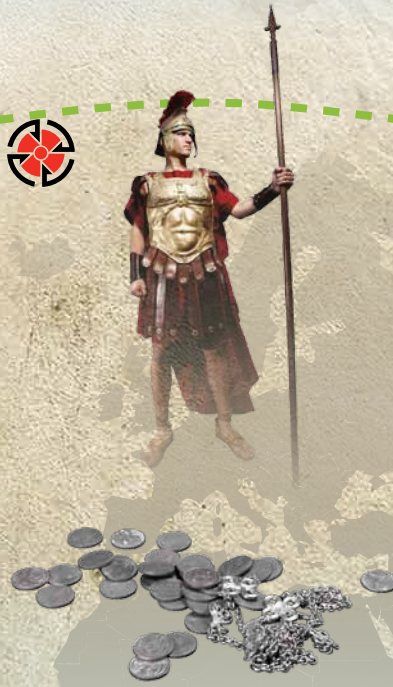
*Standard headphones, removable headphone module and WM 10 module are not waterproof.
^WM 10 supplied with Standard Pack only. Available as accessory for Starter Pack.

Discover **history** with the

CTX 3030

and record your **treasure** finds!

500 BC 200 BC 1000 AD 1500 AD 1600 AD 1650 AD 1745 AD 1862 AD 1948 AD



Roman Treasures

The reach of the Roman empire was extensive as it prevailed across Europe, Western Asia and North Africa. Our modern day world continues to reflect the strength of its influence through everything from language to law, government and trade.

When Roman rule was nearing its end... citizens, concerned for their valuables (great and small) hid them in the safest place available to them... deep in the ground beneath their feet. Many would never again return to reclaim their hidden valuables and so their legacy has lain hidden in the ground undisturbed for centuries – waiting to be discovered and preserved... waiting for their story to be revealed...



American Civil War Artefacts

It is amazing what can be uncovered across the well trodden battle fields of the Southern States of America...

Each one of these Civil War bullets is a misfire that had to be extracted from the gun barrel. These bullets were pulled from the barrel using a screw, corkscrew or other device attached to the end of a ramrod. Each one exhibits unusual features such as exceptionally large screw holes, very distinct screw threads, multiple holes or deep holes making the collection particularly interesting.

Every day, keen detectorists have the opportunity to uncover history...



Throughout the ages of history precious treasures have been created, admired, gifted, lost and stolen. Many daring explorers have searched in vain for these historic and valuable discoveries. While there have been countless stories of fabulous buried riches being found – from the coins of ancient empires to battlefield artefacts – there is still much to be discovered.

The modern day detectorist now has a much greater opportunity to uncover history by using the CTX 3030. Its advanced discrimination features, enabled by FBS 2 and Smartfind 2 technologies, allow elusive coins and treasures to be recovered, even from previously searched ground.



"Now we're talking... that's impressive!!! With Target Trace you seem to have achieved the impossible! I located a coin under a nail with twice its mass, two targets... unbelievable!"

Field Tester – UK



100% actual size shown

Choose from 10 customizable Search Modes. Five of these modes are preset to get you started (Coins, Beach, Relic, Silver and High Trash). Each Search Mode has two adjustable discrimination patterns.

Customise the Map and Detect screens to display the information you want see. (E.g. Large ID Panel, Navigation Tool, Sensitivity Panel and GPS coordinates.)

MAIN MENU

MODE

GEOSTORE

DISPLAY

OPTIONS

Easily access and sort your detecting and location data for quick reference in the field. View the details and navigate to your saved WayPoints, FindPoints, and GeoHunts.

Set up your detector for the most convenient operation with your preferred options. (E.g. Wireless, Backlight, GPS, Locality, Time Zone and measurement Units.)

For many detectorists, where something has been found is just as important as what has been found. The first explorers created geographic maps and charts to aid discovery. From ancient hand drawn maps to the latest GPS enabled devices, this mapping can now be achieved with ease and more accuracy.

GPS tools enable detectorists to navigate to a specific location and mark points of interest along the way. With the CTX 3030, a separate handheld GPS is no longer required. Navigating, recording finds and mapping are now possible through GPSi technology and the XChange 2 application.



"With the CTX 3030's ability to identify and display multiple targets under the coil simultaneously, I've been isolating and recovering coins from trashy areas like never before."

Field Tester – USA



✓x Identify...

For quickly accepting or rejecting a detected target, the **Identify** function saves you time and effort!

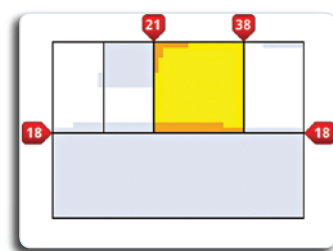
When editing discrimination patterns, there are four edit frame sizes to choose from. Use a fine edit frame for precision targeting or a coarse frame for quick results 'on the go'. Edited patterns are automatically saved within your current Search Mode. Auto accept/reject discrimination features are also available for fast pattern editing using sample targets.

Target Trace



Target Trace displays many detections per second to offer greater visual detail of a target's identity. Multiple targets are displayed as colored 'hot spots', or streaks, across the Detect screen – turning everyone into experts. Choose to have on or off while detecting or during pinpointing.

Tone ID Profile



Select and adjust detection audio tones so you can clearly hear the differences between valuable 'accepted' targets before deciding to dig. Eight Tone ID Profiles are available. Audio responses can be matched with FeCo discrimination patterns for maximum versatility.

Ferrous-Coin Separation



Separates ferrous (iron) targets from coin-like targets to improve the identification of coin-like targets that are in very close proximity to ferrous targets. Find the treasure others have missed!

Ground-Coin Separation



Separates ground signals from coin-like targets to improve the identification of coin-like targets that are affected by ground signals. This greatly improves the signal stability of good targets in mineralized ground.

✍ Detect...

When you are searching, the **Detect** screen shows you all the target information you need to find more treasure – you won't miss anything!

The color display, Ferrous and Conductivity numbers, numerical depth indicator and sensitivity panel will give you more confidence to find those elusive good targets in heavily searched and high trash areas. Quickly select between two discrimination patterns (P1, P2) for each Search Mode. Activate Target Trace to view real-time visual target information. Use Target Trace Pinpoint for target verification.

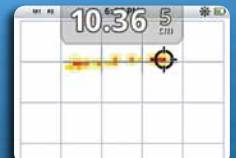
Detect Quick Menu



Detect Screen



Target Trace Examples



Low conductive and high conductive coins



High conductive coin and ferrous trash



Low conductive coin and ferrous trash



Erratic Target Trace indicating rusty junk

Target ID Numbers/Depth



On/Off

Also gives options for language selection and detector reset.



Sensitivity

Manual and Automatic Sensitivity options to maximise detection depth in all ground conditions.



Noise Cancel

Manual and Automatic Noise Cancel options to minimise external interference. This ensures faint target signals can be heard.

CTX 3030



100% actual size shown

MAIN

MODE

DISPLAY

MENU

GEOSTORE

OPTIONS

Choose from 10 customizable Search Modes. Five of these modes are preset to get you started (Coins, Beach, Relic, Silver and High Trash). Each Search Mode has two adjustable discrimination patterns.

Customise the Map and Detect screens to display the information you want see. (e.g. Large ID Panel, Navigation Tool, Sensitivity Panel and GPS coordinates.)

Easily access and sort your detecting and location data for quick reference in the field. View the details and navigate to your saved FindPoints, WayPoints, and GeoHunts.

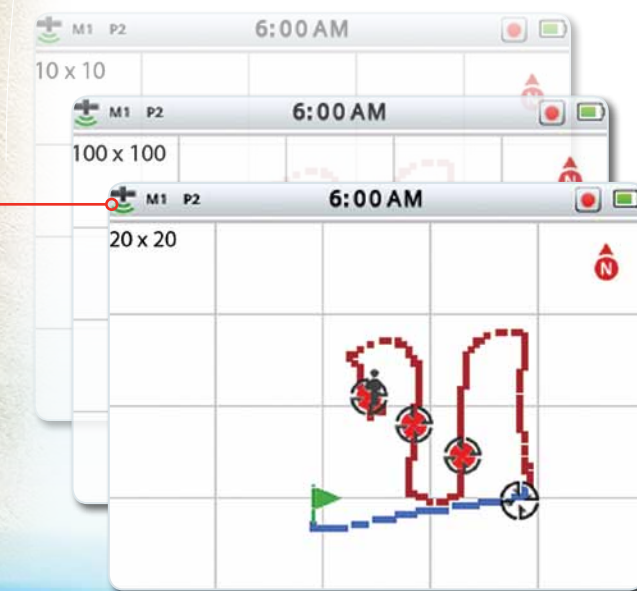
Set up your detector for the most convenient operation with your preferred options. (e.g. Wireless, Backlight, GPS, Locality, Time Zone and measurement Units.)

Map...

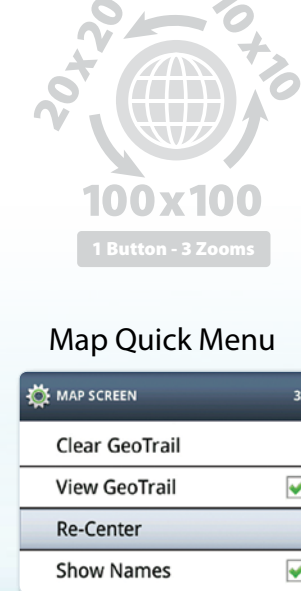
When you want to check treasure locations or ground you have covered, the **Map** screen shows you the way – no need for a separate GPS!

The GeoTrail displays the path where you have been so you don't waste time detecting the same ground twice. Use WayPoints and FindPoints to create your own treasure map. Quickly select between three zoom levels (10 x 10, 20 x 20, 100 x 100) giving close up and wide views. The FeCo target data can also be displayed so you can navigate and detect at the same time. Map details can be turned on or off for easy viewing.

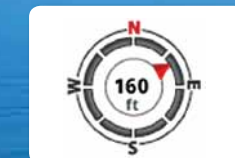
Map Screen



Map Quick Menu



Navigation Tool



Use the Navigation Tool to guide you to the next detecting site. No need to use a separate GPS device. Use the direction and distance indicators to locate where you finished detecting yesterday/last week/last year. Navigate to WayPoints you have created on Google Maps and downloaded to your detector. Go back to a previously marked FindPoint to search for more treasure.

North Pointer



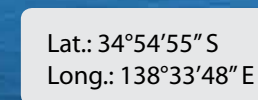
GPS On Point



Current Position



GPS Coordinates



Ground Balance

Improved ability to effectively 'see through' heavily mineralized ground. This can enable accurate detection at greater depth in these conditions.



Audio

Threshold and Volume options to optimize Audio settings for your personal hearing and detecting surroundings.



User

Select from many functions and assign your favorite 'shortcut'.

Store...

For recording find locations and entire treasure hunts, the **Store** function does it all!

WayPoints are used as general position markers to easily navigate to your favorite locations. FindPoints capture location, detector and target data for storing details of your treasure finds. Record your entire detecting session as a GeoHunt for future reference. All information can be uploaded to a PC and viewed on Google Maps using the XChange 2 application.

WayPoint



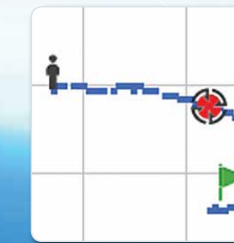
WayPoints are used just like in other GPS devices. Each WayPoint comprises of location and time data. You can use WayPoints to mark general locations of interest and for navigating to detecting areas. One hundred WayPoints can be stored in the detector.

FindPoint



FindPoints bring together all of the important information you need to know about your treasure finds. WayPoint data is combined with target data and detector settings, at the time of discovery, to create a FindPoint. One hundred FindPoints can be stored in the detector.

GeoTrail



A GeoTrail is a colored trail on the Map screen which shows where you have been detecting. You can be confident that no ground has been left unsearched. The GeoTrail changes color when being recorded as part of a GeoHunt.

GeoHunt



A GeoHunt is made up of your GeoTrail and any WayPoints and FindPoints you mark along the way. A GeoHunt is displayed on the Map screen and can be placed onto Google Maps to record your successes and plan your next hunt. Ten GeoHunts can be stored in the detector.

Fill in your favorite treasure discoveries in distinctive colors with XChange 2.

XChange 2

Your Detecting Connection

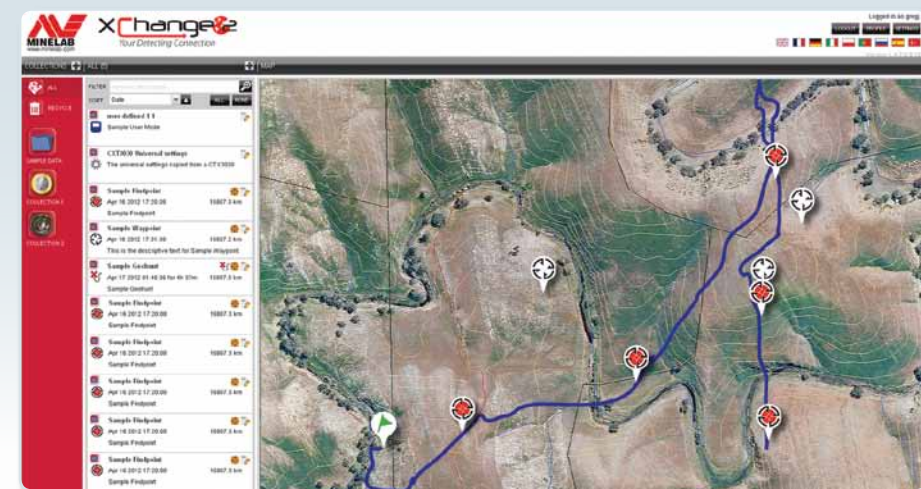
Your world of discovery can now be simply managed on your personal computer (PC). XChange 2 allows you to store and retrieve a combination of finds, detector and location data. This information can also be displayed on Google Maps. It has never been easier to keep track of your detecting adventures and plan your next hunt.

By connecting the CTX 3030 to XChange 2 you can transfer WayPoints, FindPoints and GeoHunts to and from your PC (an internet connection is required to view Google Maps). All of your personal detecting data is stored locally and securely on your PC and is not accessible by others via the internet.

- Add text comments and photos to your finds and/or hunts. Important detecting information can now all be stored in one place with one PC application.
- Categorise and color code target types on your maps and arrange in Collection folders. You can create an unlimited database of your detecting information for future reference.
- Create new WayPoints for navigating to detecting locations of interest.
- Edit, rename and download finds, detector settings and location data to your CTX 3030 to assist with your next hunt.

The versatility of XChange 2 is only limited by your imagination. Take your detecting 'game plan' to the next level by following treasure trends and identifying potential treasure sites. You can even share your favorite detector settings and exciting discoveries with friends.

XChange 2 will change the way you go detecting – forever!



"I have been playing around with the XChange 2 software, and I really like it! I think this software is going to appeal to the younger detectorist, and the pro who needs to know exactly where he previously found something interesting."

The ability of designing a search mode, editing a discrimination pattern, and then naming it before uploading to the detector, is fantastic!

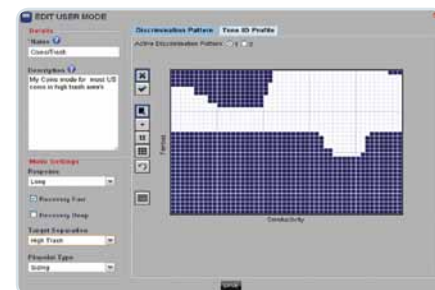
Field Tester – UK



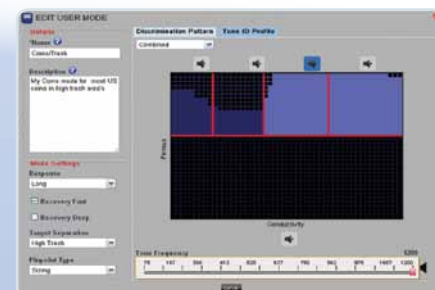
Add FindPoint Information



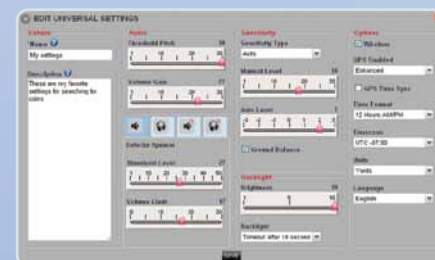
Edit Discrimination Patterns



Edit Tone ID Profiles



Edit Universal Settings



XChange 2 is supplied free on CD with every CTX 3030 detector and it is also available as a free App download from www.minelab.com/apps for everyone to use.

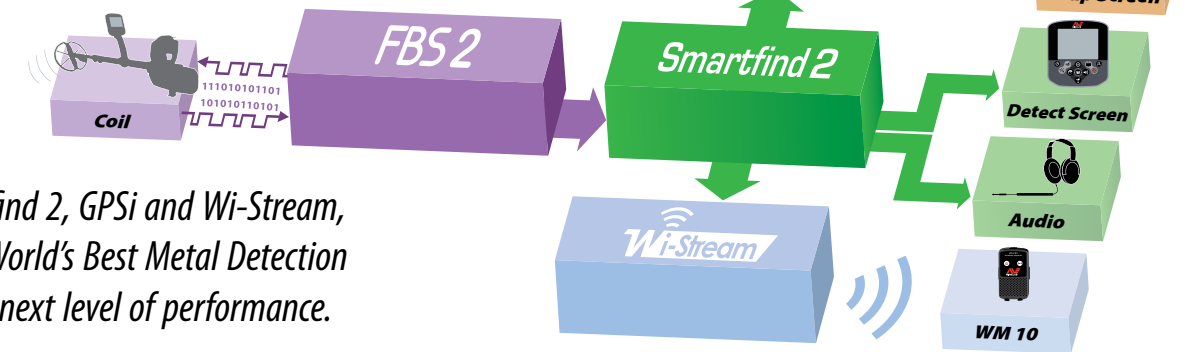
"Wireless is awesome and the signal is fine even with the volume cranked."

Field Tester – Australia



Key Technologies

The CTX 3030 uses advanced electronics and signal analysis to give you much more information about buried targets than any other detector.



With FBS 2, Smartfind 2, GPSi and Wi-Stream, Minelab takes the World's Best Metal Detection Technologies to the next level of performance.

FBS 2

FBS 2 combines Minelab's FBS multiple frequency rectangular-wave transmission (1.5 kHz – 100 kHz) with advanced digital coil-to-detector communications. The precisely calibrated smart coils and detector electronics allow advanced signal analysis for more accurate detection.

Smartfind 2

Smartfind 2 greatly enhances Minelab's FeCo Discrimination to analyze and display a target's Ferrous (Fe) and Conductive (Co) properties on a full color LCD. Ultra-fast microcontrollers carry out digital signal processing to provide significantly improved target separation.

WM 10 Wireless Module*

Choose from three wireless audio options:

- Use the built-in speaker on the WM 10
- Connect the supplied headphones to the 1/4-inch socket on the WM 10
- Connect your own favourite headphones to the 1/4-inch socket on the WM 10

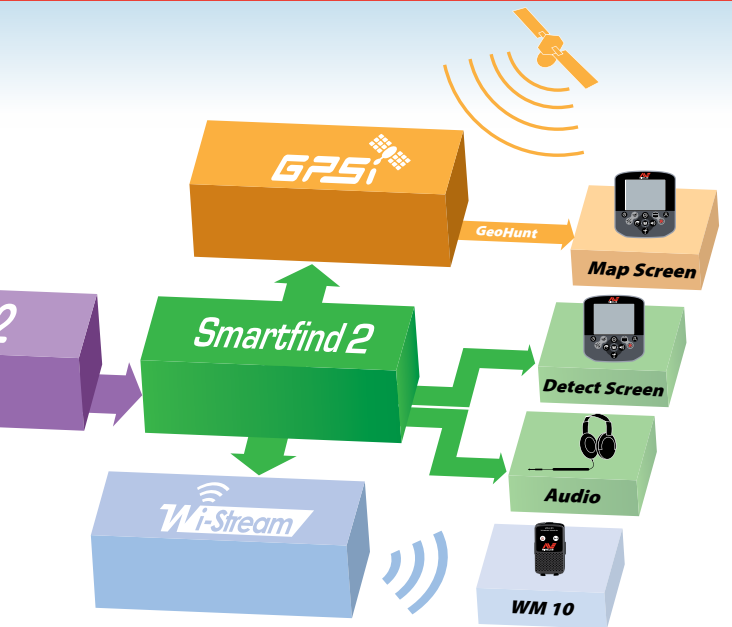
CTX 3030 Detector Audio

Choose from four wired audio options:

- Use the built-in speaker on the detector
- Connect the supplied headphones to the 1/4-inch socket on the Headphone Module
- Connect your own favourite headphones to the 1/4-inch socket on the Headphone Module
- Connect the waterproof headphones^ to the waterproof socket after removing the standard Headphone Module

*Supplied with Standard Pack only. Available as accessory for Starter Pack.
^ Available as accessory.

The Future of Discovery



GPSi uses the high performance and flexibility of a u-blox GPS positioning engine to seamlessly integrate location and time data with detector settings and target information. This creates WayPoint, FindPoint and GeoHunt files that are compatible with XChange 2.

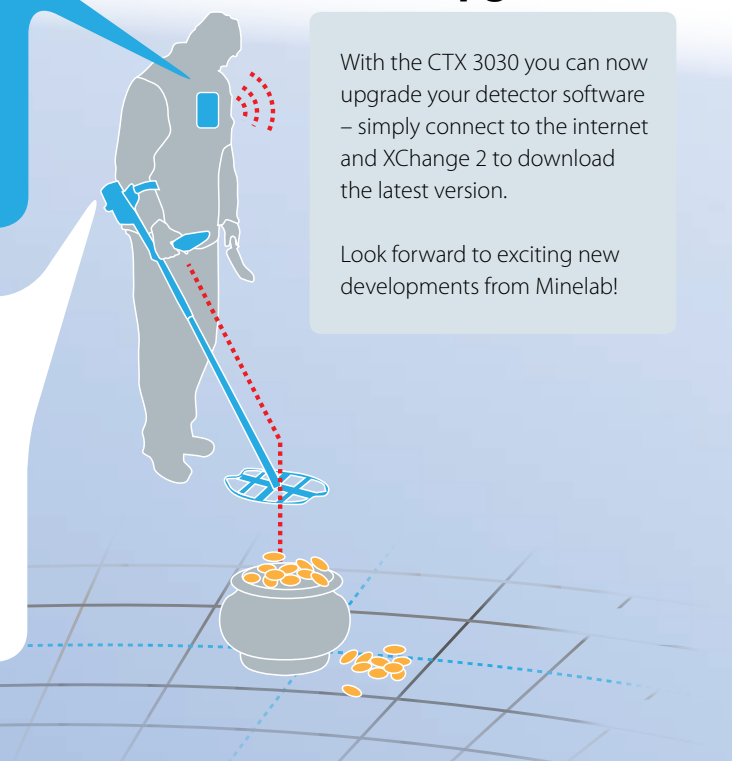


Wi-Stream uses efficient low-power digital audio transmission to achieve no perceivable audio time lag (<10 ms) from the CTX 3030 to the WM 10. With multiple channel capability, this wireless technology provides reliable communication with maximum sound quality.

Software Upgrades

With the CTX 3030 you can now upgrade your detector software – simply connect to the internet and XChange 2 to download the latest version.

Look forward to exciting new developments from Minelab!



	Starter Pack (part # 3228-0102)	Standard Pack (part # 3228-0101)
Overview	Ultimate performance multi-frequency TREASURE detector with enhanced FeCo discrimination, integrated GPS and wireless audio options, all in a sleek rugged design that is waterproof (IP67 rating) to 10 ft (3 m).	
Search Modes	10 fully customizable, including 5 preset (Coins, Beach, Relic, Silver & High Trash) 2 Pinpoint options (Normal and Sizing)	
Discrimination Patterns	20 fully customisable (2 per Search Mode)	
Discrimination Type	Enhanced Color discrimination (35 Fe x 50 Co = 1750 segments), Target Trace, Target Trace Pinpoint, Tone ID Profiles, Target Separation (Ferrous-Coin and Ground-Coin), Accept/Reject cursors	
Ground Compensation	Auto Compensation and Auto Ground Balance	
Noise Cancel	Auto and Manual (11 channels)	
Threshold	Level adjustment (1–50), Pitch adjustment (1–30)	
Sensitivity	Auto and Manual (1–30)	
Display	Full color LCD with backlight and adjustable brightness (1–10)	
Standard Coil (CTX 11)	11-inch waterproof Double-D smart coil	
Audio Outputs	Built-in speaker, standard ¼-inch non-waterproof socket, custom waterproof socket (Minelab accessory headphones only)	
Wireless Audio (WM 10)	No (available as accessory)	Yes (supplied with detector)
Headphones	KOSS UR30 (100 ohm) supplied with detector (non-waterproof)	
Batteries (Li-ion pack)	Yes (with fast charger). 12 V car adapter supplied with Standard Pack only	
Batteries (8 x AA pack)	No (available as accessory)	Yes (supplied with detector [^])
Length	Min 37 in. (940 mm) – Max 55.3 in. (1405 mm)	
Weight	5.20 lbs (2.36 kgs) including Li-ion battery pack	
PC Connection	XChange 2 (via USB) compatible with Windows XP, Vista and 7	
Key Technologies	FBS 2, Smartfind 2, GPSi, Wi-Stream	

Accessories



CTX 06 Smart Coil (part # 3011-0114)

The waterproof 6-inch round Double-D coil is very sensitive to small targets, and perfect for finding treasure in high trash areas. It is also ideal for manoeuvring in difficult terrain. A protective skidplate is included.



CTX 17 Smart Coil (part # 3011-0116)

The waterproof 17 x 13-inch elliptical Double-D coil provides maximum depth for specialised treasure hunting. It is also great for wide ground coverage in open spaces. A protective skidplate is included.



Waterproof Headphones (part # 3011-0134)

These fully submersible headphones provide excellent audio for all weather conditions and underwater use.



WM 10 Wireless Module* (part # 3011-0120)

This module provides clear wireless audio without any perceivable time delay. Use the built-in speaker or your choice of headphones.

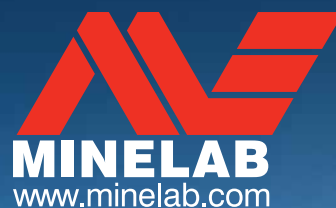


Replaceable Battery Pack*[^] (part # 3011-0117)

Forgotten to charge your battery? This pack provides the option of using 8 x AA cells as an alternate power source.

*Supplied with Standard Pack only. Available as accessory for Starter Pack.

[^]Not supplied with AA battery cells.



Minelab Electronics Pty. Ltd.

118 Hayward Ave, Torrensville
Adelaide, South Australia 5031
Australia

Tel: +61 (0) 8 8238 0888

Fax: +61 (0) 8 8238 0890

Email: minelab@minelab.com.au

Minelab International Ltd.

Unit 207, Harbour Point Business Park
Little Island, Co. Cork

Ireland

Tel: +353 (0) 21 423 2352

Fax: +353 (0) 21 423 2353

Email: minelab@minelab.ie

Minelab Americas Inc.

2777 Finley Road. Unit #4.
Downers Grove, IL. 60515
USA

Tel: +1 888 949 6522

Fax: +1 630 401 8180

Email: info@minelabamericas.com



Easily manage your detecting and location data. XChange 2 is supplied on the CTX 3030 CD, or is available as a FREE download from:

www.minelab.com/apps

Minelab®, CTX®, Smartfind™ 2, FBS™ 2, Wi-Stream™, GPSi™, FindPoint®, GeoHunt™, GeoTrail™, XChange Your Detecting Connection™ are trademarks of Minelab Electronics Pty. Ltd. Google Maps is a trademark of Google Inc. u-blox is a trademark of u-blox Holding AG.